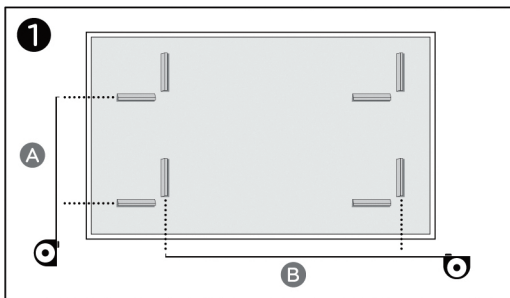




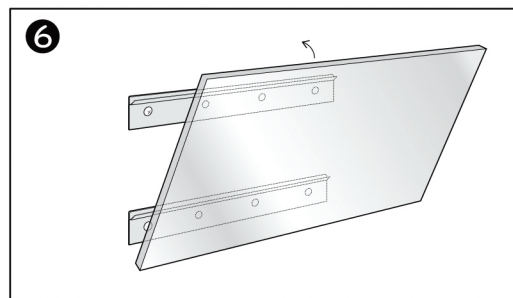
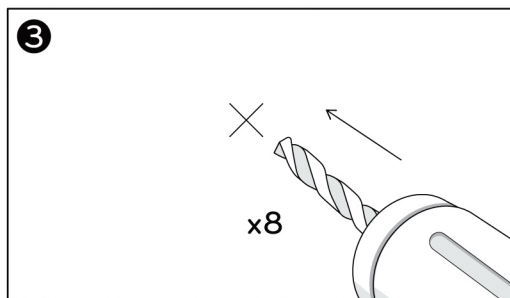
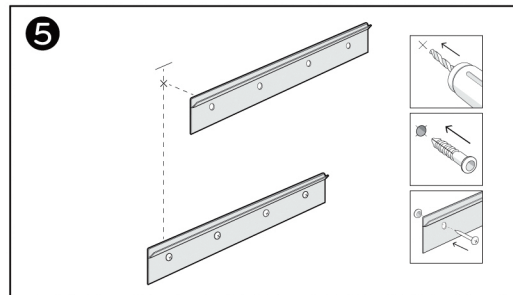
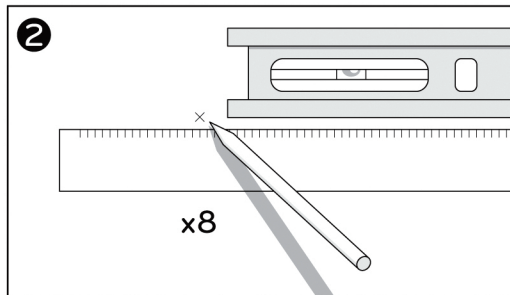
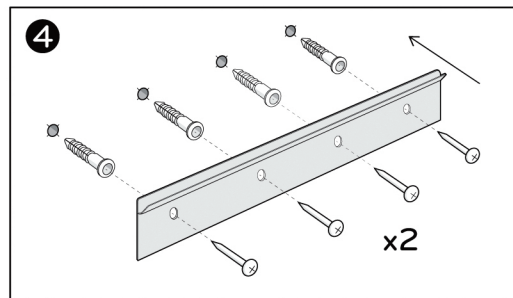
J&J

TOOLS NEEDED:	- DRILL	- LEVEL	- TAPE MEASURE
	- 1/4" DRILL BIT	- PHILLIPS HEAD SCREWDRIVER	- PENCIL

FLOATING GLASSBOARD INSTALLATION INSTRUCTIONS 4 HOLE MOUNT



A. HORIZONTAL MOUNTING B. VERTICAL MOUNTING



TRAY INSTALLATION INSTRUCTIONS (IF NEEDED)

